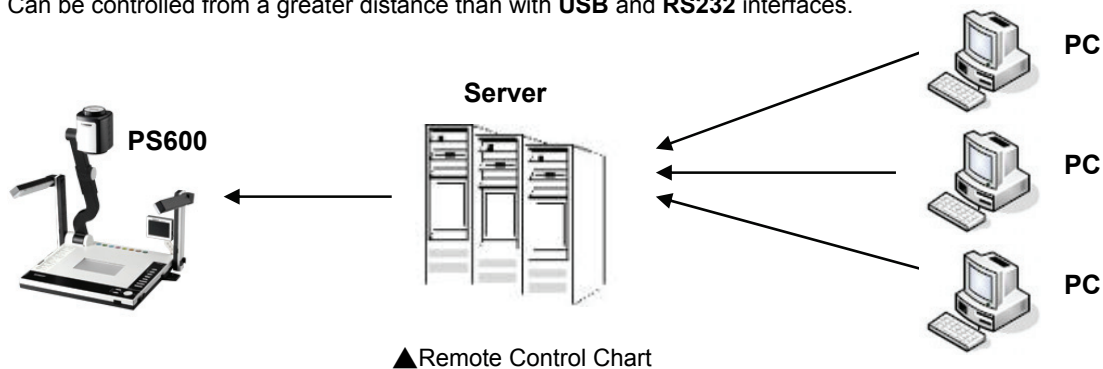


# How To Use the Network Control Function

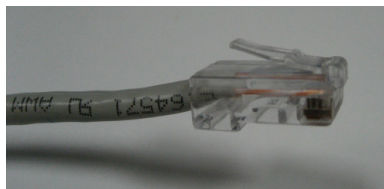
## 1. What network control is for:

- 1.1. With the **PS600** Support Network Console, the user can remotely use the functions of the **PS600** through a web browser (Ex: **IE, Netscape, Firefox, Opera**).
- 1.2. **Ethernet** provides many-to-one control so multiple computers can simultaneously control the platform.
- 1.3. Can be controlled from a greater distance than with **USB** and **RS232** interfaces.

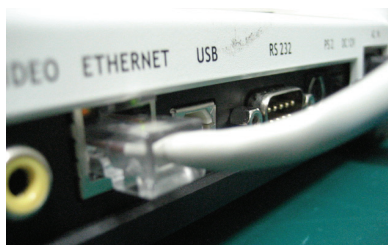


## 2. Connect:

- 2.1. **Get a RJ-45 Internet cable:** A network cable used for **Internet** and **Ethernet** environments with a **RJ-45** connector.



- 2.2. **Connect:** Connect one end of the cable to the Ethernet port of the **PS600**, and the other end to the **HUB** or switch.



## 3. Network settings

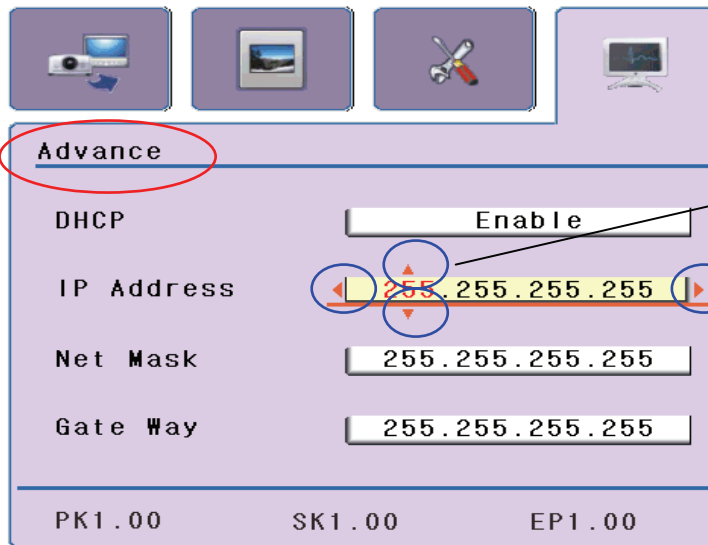
### 3.1. Enter the OSD-advance menu:

- 3.1.1. Use the remote control or buttons on the panel: Press **MENU** and go to the **Advance** page with the arrow buttons.

### 3.2. Parameter settings:

- 3.2.1. Before setting network parameters, confirm the parameters of the domain environment with your **MIS** or **ISP**.
- 3.2.2. **DHCP** settings: Dynamic Host Configuration Protocol is used to dynamically distribute **IP** addresses, designated for use by different platforms on the LAN.
  - **Enable/On:** Used for dynamic IP addresses, after being set as **ENABLE/ON**, the platform will automatically search for a usable **IP** address in the domain after the computer restarts, and automatically configures the value of the acquired **IP, Net Mask, and Gate Way**.
  - **Disable/Off:** Used for static IP addresses, when there is an **IP** address for use by the platform, the user can independently enter the values for the **IP, Net Mask, and Gateway** (ask **MIS** personnel for the network **IP**

values for this application environment)



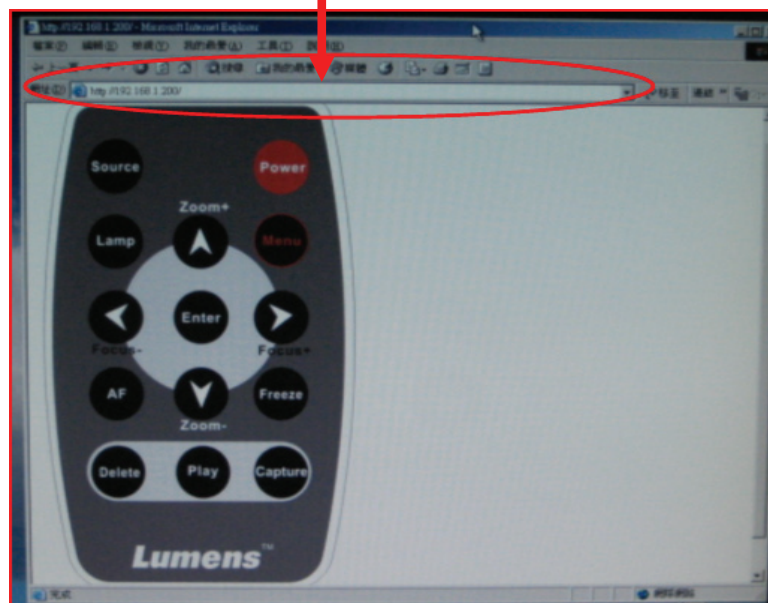
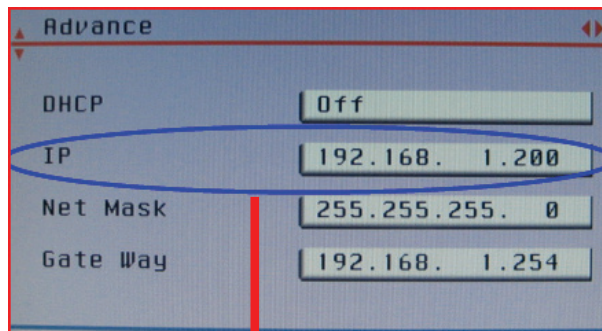
**How to Set IP Address :**

1. Press **▼** to go to IP address
2. Press **ENTER** to enter settings
3. Press **◀ ▶** to select values
4. Press **▼ ▲** change values

**3.3. After exiting the OSD Menu, restart the platform**

**4. How to operate**

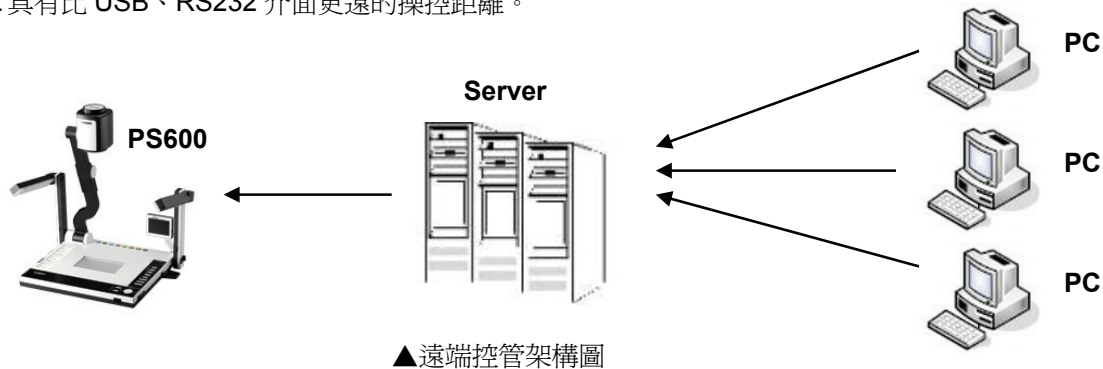
- 4.1. Open your browser (**Ex: IE, Netscape, Firefox, Opera**) and enter the **IP address** of the **Advance** page in the URL.
- 4.2. After transmitting, the web page content will display the image of the **PS600** remote control panel, as shown below.
- 4.3. Use the mouse to click on the buttons on the remote control panel, which allow you to use the functions of the **PS600**.



# 如何使用網路控管功能

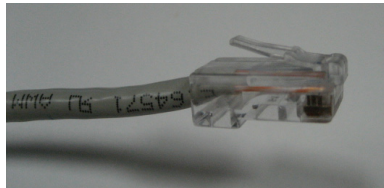
## 1. 為何要使用網路控管

- 1.1. PS600 支援網路操控介面，使用者可以透過電腦的瀏覽器(Ex: IE, Netscape, Firefox, Opera) 遠端使用 PS600 的各項功能。
- 1.2. Ethernet 提供多對一控制支援，可多台電腦同時操控展台。
- 1.3. 具有比 USB、RS232 介面更遠的操控距離。

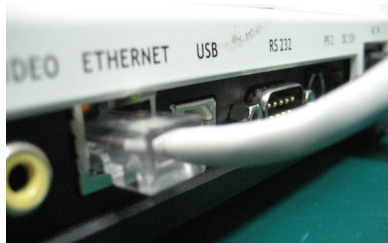


## 2. 安裝線路

- 2.1. 準備 RJ-45 網路線：應用於 Internet、Ethernet 環境下要使用一般網路線 - RJ-45 接頭。



- 2.2. 安裝線路：網路線一端連接 PS600 的 Ethernet 接孔，而另一端連接 HUB 或交換器。



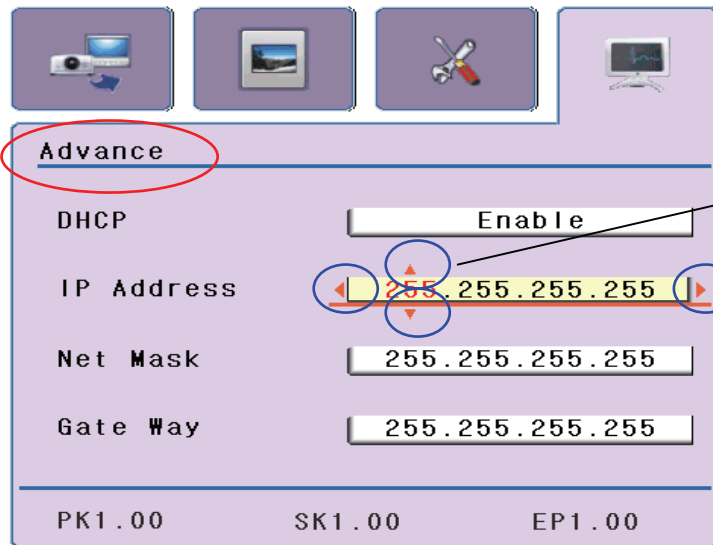
## 3. 網路設定

### 3.1. 進入 OSD-Advance 選單：

- 3.1.1. 使用遙控器或面板上按鍵：按『Menu』並以『◀▶』移到[Advance] 頁面。

### 3.2. 參數設定：

- 3.2.1. 進行網路相關參數設定前，請向網管人員(MIS)或網際網路服務提供者(ISP)確認所在網域環境之參數。
- 3.2.2. DHCP 設定：動態主機配置協定，用以動態分配 IP 位址，指定給區域網路中不同的展台使用。
  - ▶ Enable/On(開啓)：適用於IP位址不固定，設定開啓(Enable/On)後，展台將於重新開機後自動搜尋網域內可用之 IP 位址，並自動配對取得 IP、Net Mask、Gate Way 的值。
  - ▶ Disable/Off(關閉)：適用於固定 IP 位址，若已有 IP 位址可供展台使用，可自行輸入 IP、Net Mask、Gate Way 的設定值 (可向網管或 MIS 人員詢問該使用環境的網路 IP 設定值)。



**如何設定 IP Address :**

1. 按『▼』移到 IP Address
2. 按『Enter』進入設定
3. 按『◀ ▶』選擇要設定的值
4. 按『▼▲』跳動數值

3.3. 離開 OSD Menu 選單後，請重新啟動展台

#### 4. 操作使用

- 4.1. 請開啓電腦中的瀏覽器(Ex: IE, Netscape, Firefox, Opera)，[網址]處輸入 Advance 頁之 IP Address。
- 4.2. 傳輸完成的網頁內容會顯示出 PS600 遙控器面版的圖樣，如下圖示。
- 4.3. 使用滑鼠點選遙控器面版上的按鍵，即可使用 PS600 之相對功能。

